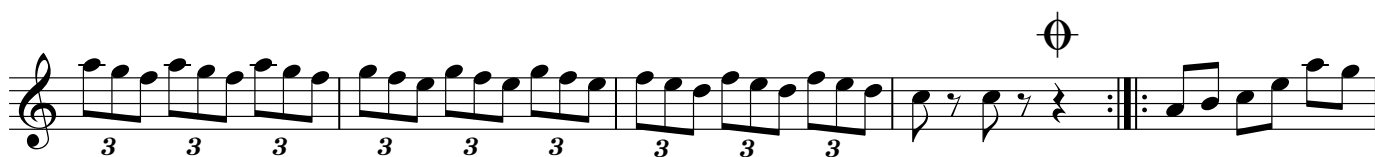


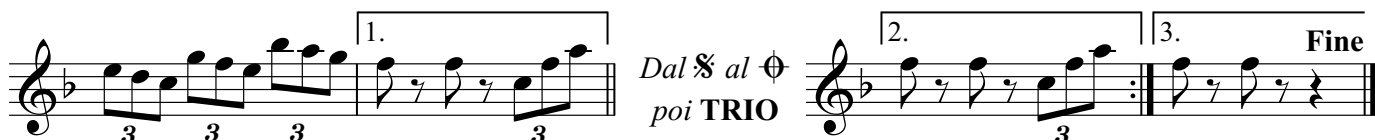
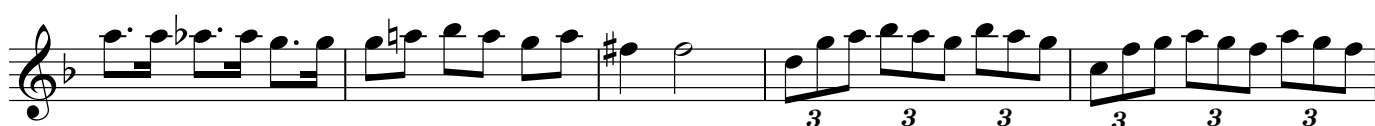
**Programmare:**  
**Compositore BASSISSI**  
**Titolo LA GIRANDOLA**

**Musica di:**  
**BASSISSI - FERRACCI**

The first staff of music is in 3/4 time, marked with a repeat sign. It begins with a treble clef and a key signature of one flat (B-flat). The melody consists of eighth and quarter notes, with a triplet of eighth notes in the fourth measure. The notes are: G4 (quarter), A4 (quarter), B4 (quarter), C5 (quarter), B4 (quarter), A4 (quarter), G4 (quarter), F4 (quarter), E4 (quarter), D4 (half).



*Dal* **♯** *al* **♯**  
*poi* **TRIO**



*Dal* **♯** *al* **♯**  
*poi* **TRIO**

**Fine**